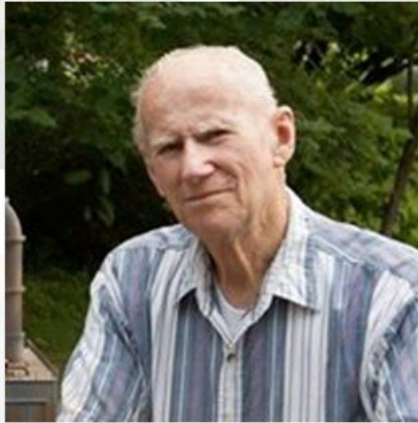


The Mill is a publication of the Steel Mill Modeling and Steel Mill Pictorial groups

THE MILL

July 2021



Dean Freytag

Part 2: Buildings I

Reason of these Special Issues

I am one of many modelers who did not have a chance to meet Dean before his passing but are highly influenced by his modeling of the steel industry. Many newcomers to the hobby that model steel mills don't recognize the name, Dean Freytag. In this and following issues I hope to introduce these modelers to Dean's layout and show modelers with a little imagination an empire can be built. Dean's layout was not built overnight and it did see many changes over the years as Dean's added to and took away from his steel empire.

This is the first of 3 special issues of The Mill Newsletter featuring the late Dean Freytag's South Ridge and Davis Steel layout. In this issue we will take a look at the over layout. Issue two will consist of the structures Dean built and issue three will be of his vehicles and rolling stock. There may be a possible forth issue of random pictures that members didn't submitted in time to be published in these issues.

In this issues, you will find photos taken by modelers that visited Dean's layout during various times of the building of it. The photos will be categorized by people that submitted them and all are used with permission by the person who submitted the photos.

Dean was known to many as the father of steel mill modeling.

Sadly Dean passed away December 25, 2010.

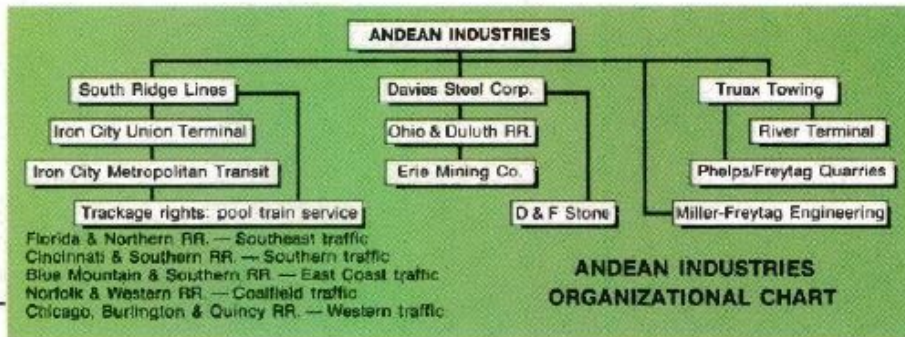
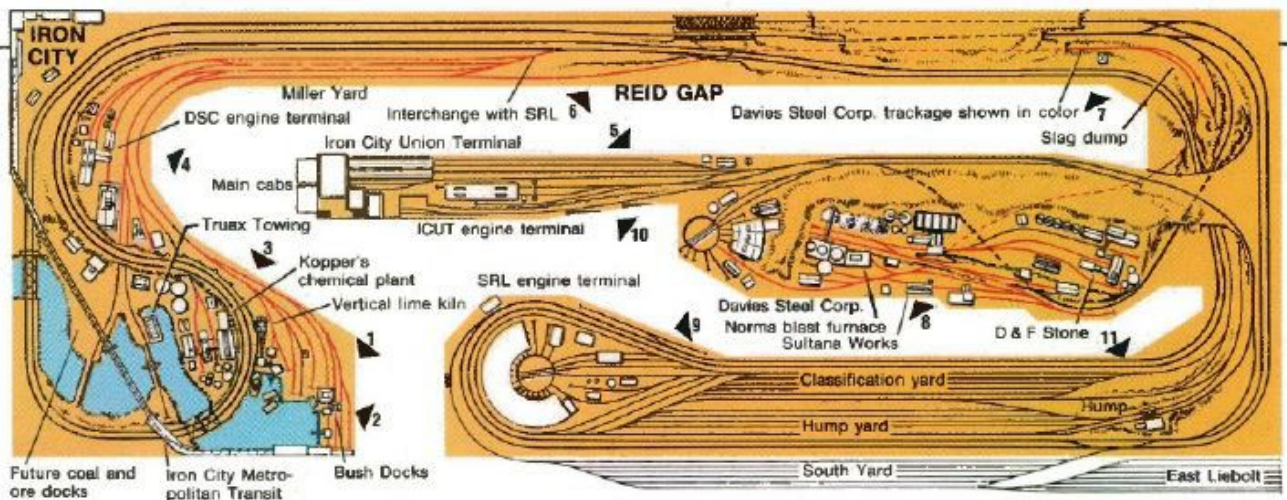
Special Thanks

Special thanks goes out to the following people who contributed pictures to make these special issues possible

Brain Shaw
Dale Desser
David Lemke
Hein Hopmans
John Miller
John Teichmoeller
Tom Stewart
Ken Stroebe

Table of Contents

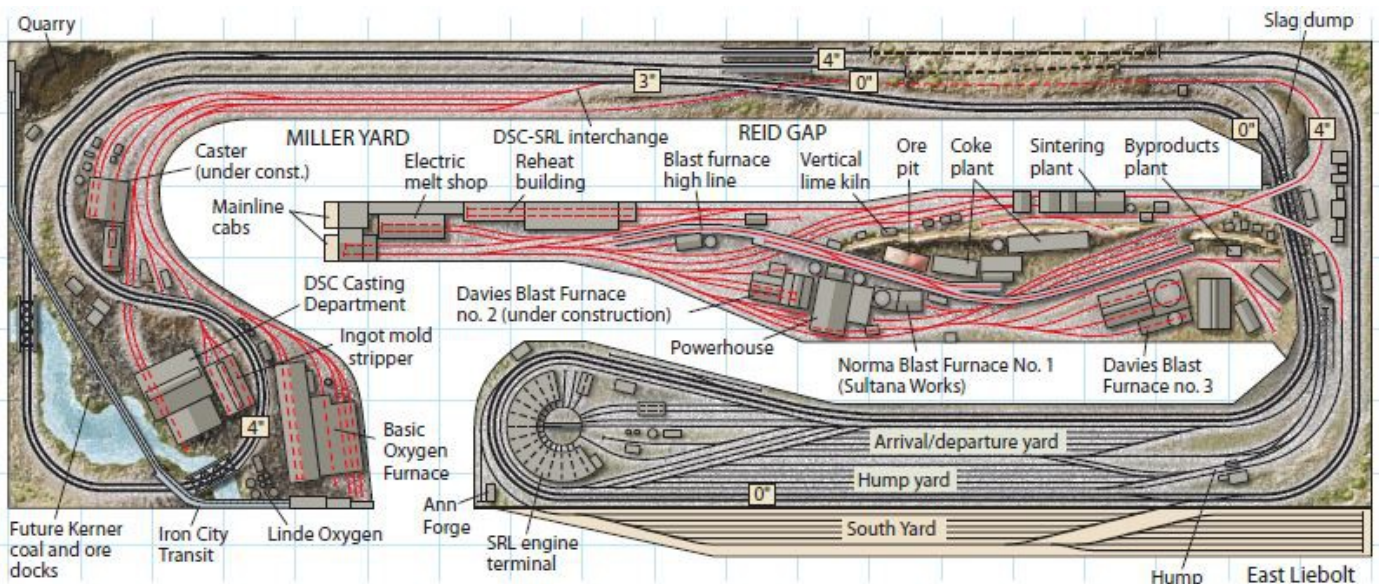
PG: 3 Layout diagrams
PG: 4 Basic Oxygen Furnace (BOF)
PG: 10 Blast Furnaces
PG: 22 Continuous Caster



SOUTH RIDGE LINES RR.
 Not to scale Overall room size: 13'-0" x 38'-0"



Layout drawings show the changes that Dean made to the South Ridge Lines between November 1998 and November 2008.



SOUTH RIDGE LINES RR

Scale: 3/16" = 1'-0"

24" grid

Davies Steel Corp. tracks in color

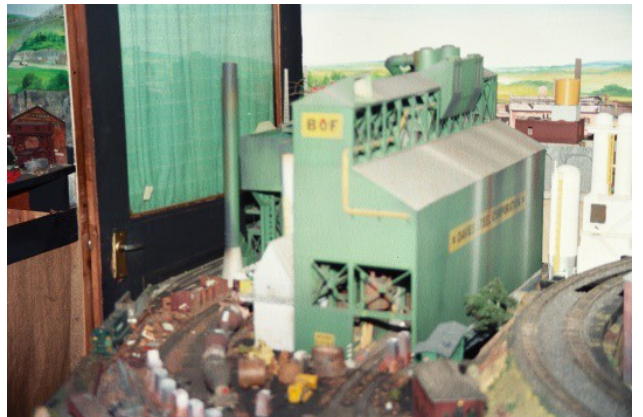
© 2003 Kalmbach Publishing Co., Model Railroader

Layout drawings used with permission from Kalmbach Publishing.

Basic Oxygen Furnace (BOF)

Photos are from Brain Shaw's collection





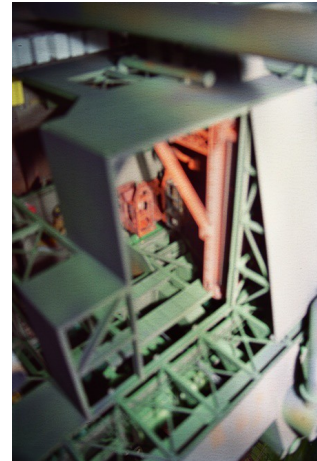
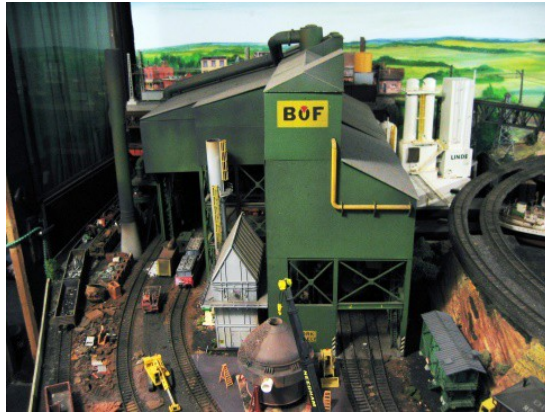


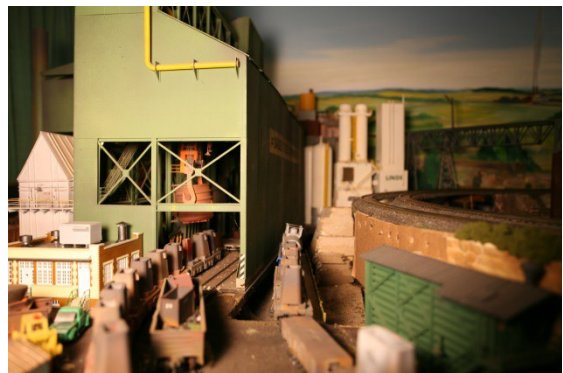
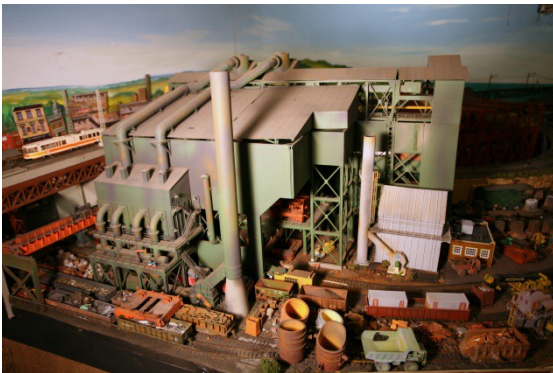
Photo are from John Teichmoeller's collection



Photos are from John Miller's collection



Photos are from Hein Hopman's collection



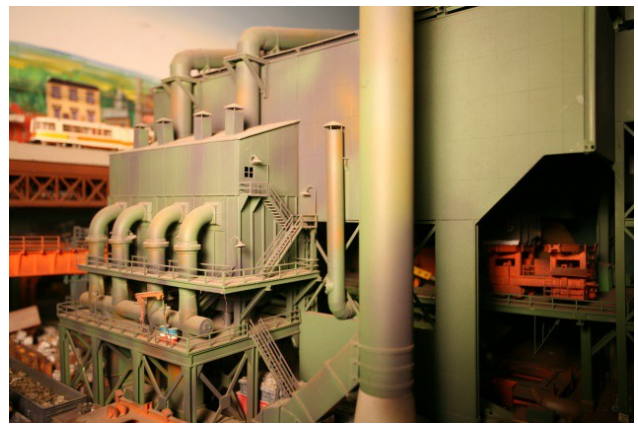
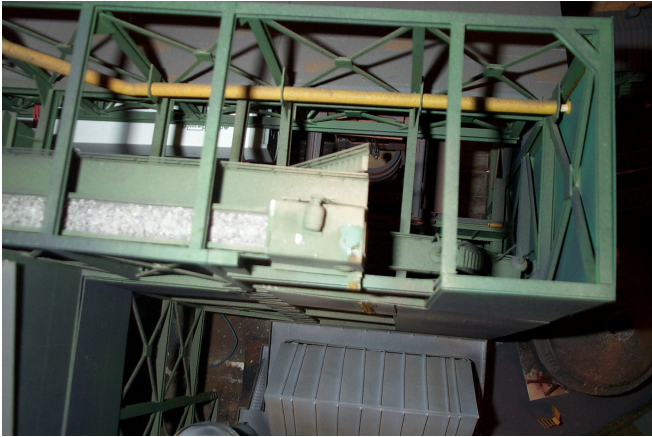


Photo are from Kem Stroebel's collection



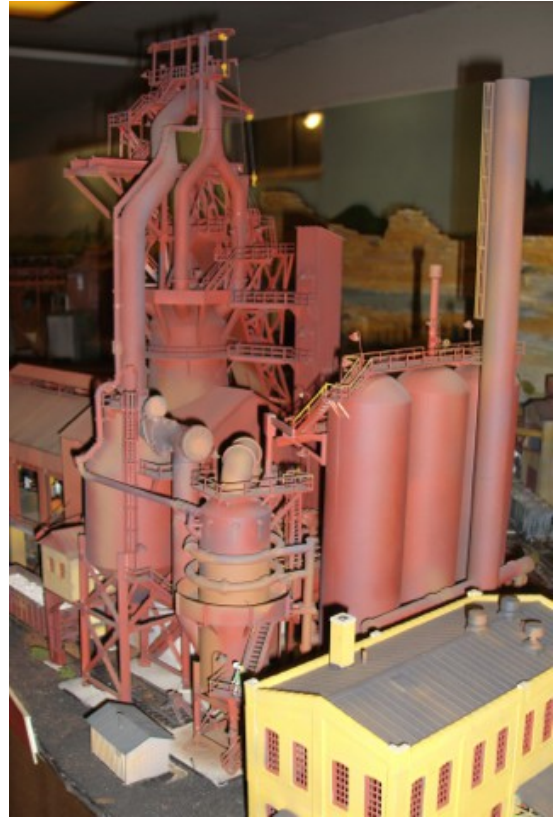
Photos are from Dale Desser's collection





Chapter 2: Blast Furnaces

Photos are from Brain Shaw's collection

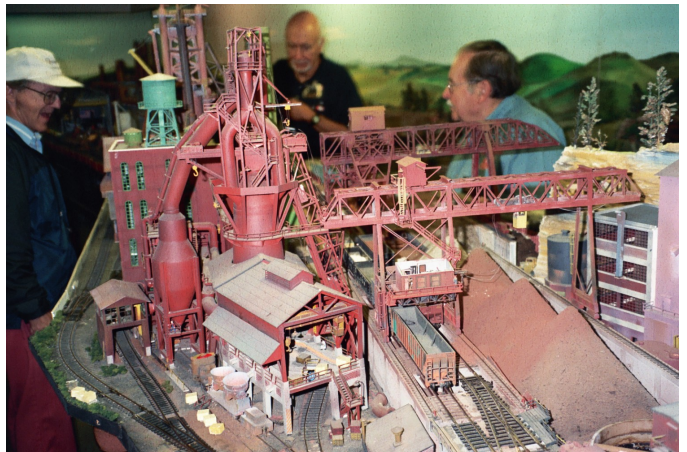
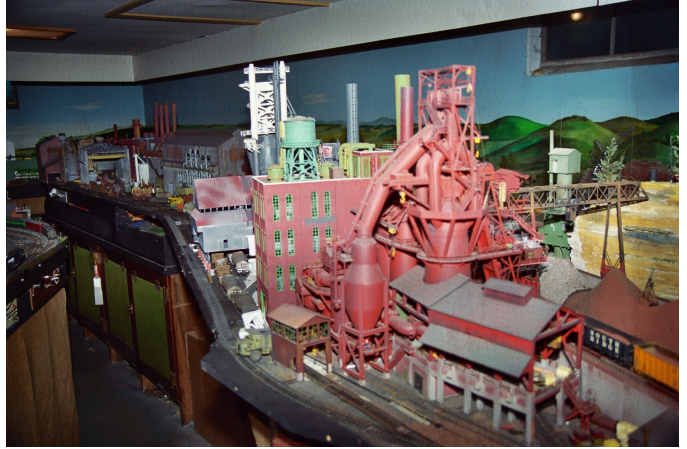
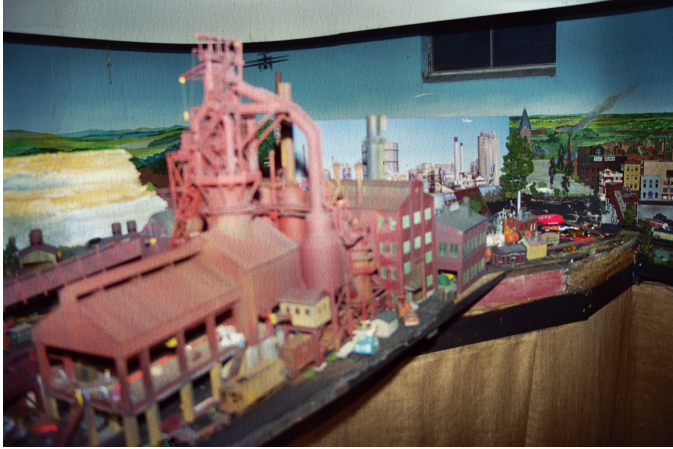
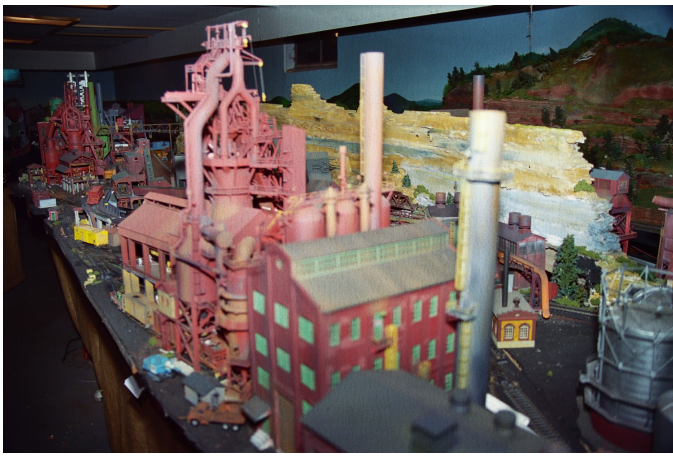






Photos are from Tom Stewart's collection





Photos are from John Teichmoeller's collection

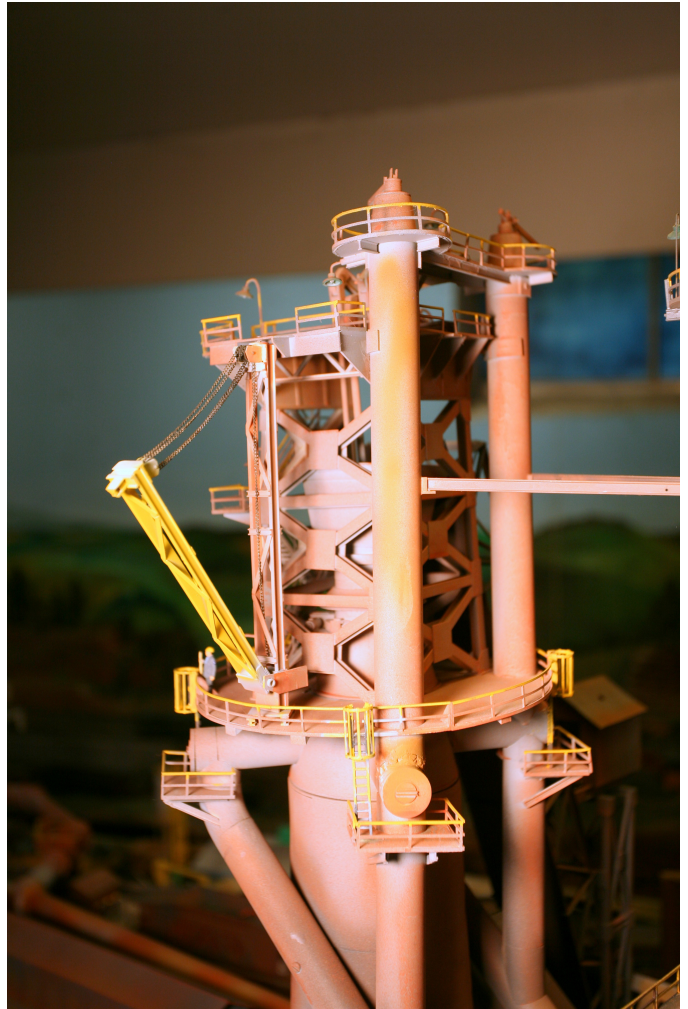
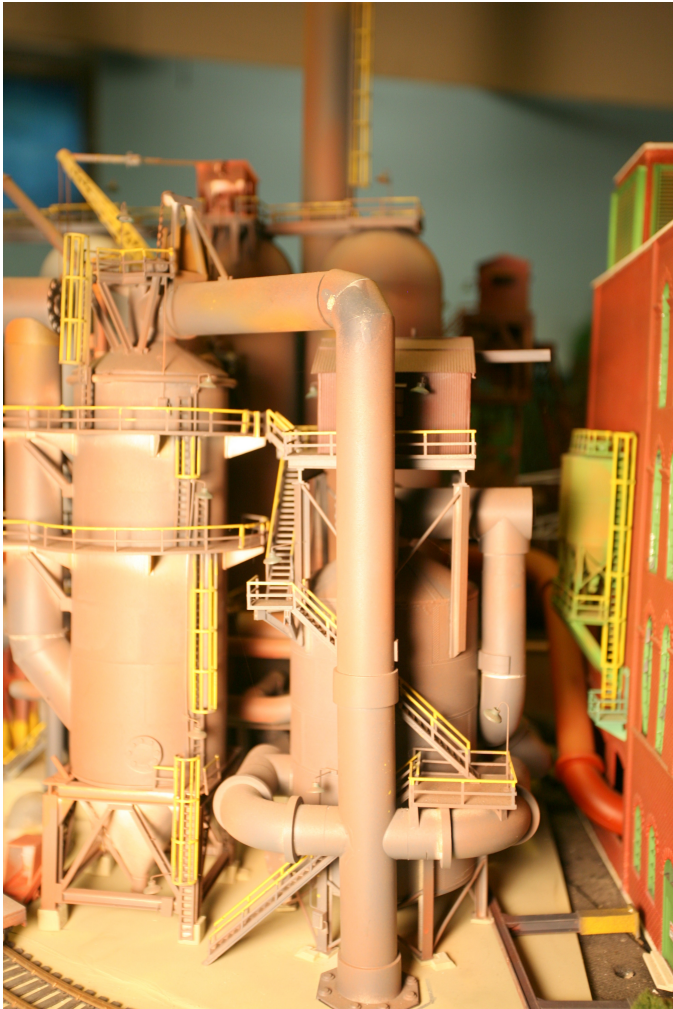


Photos are from John Miller's collection





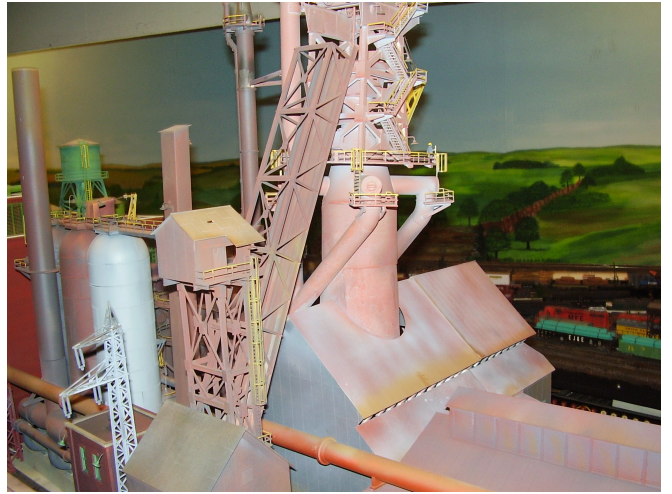
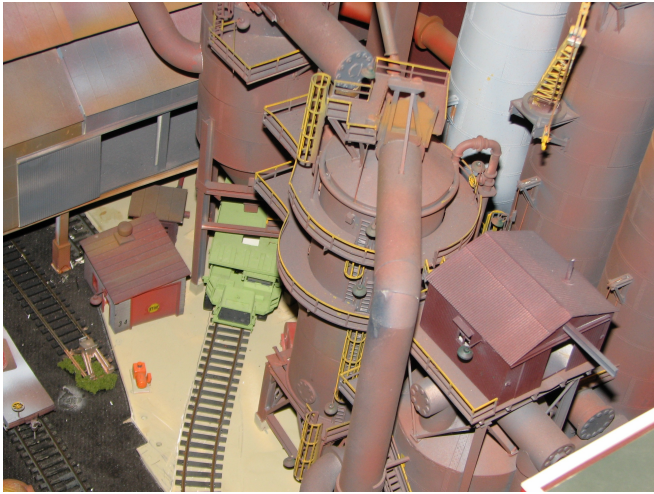
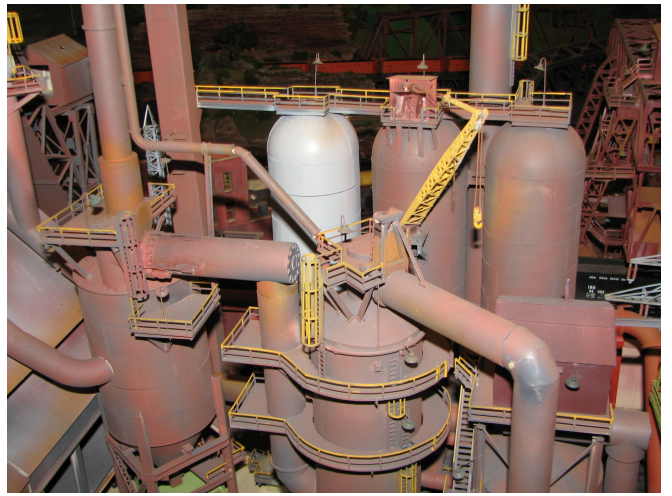


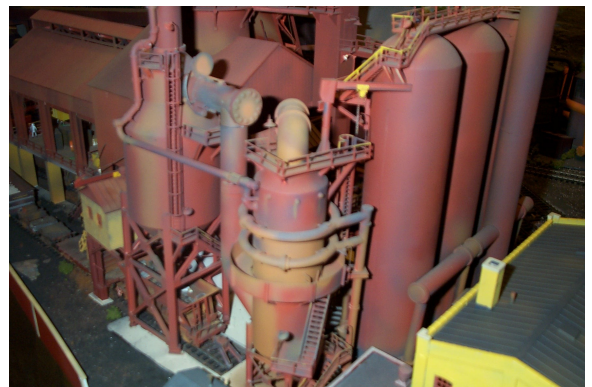
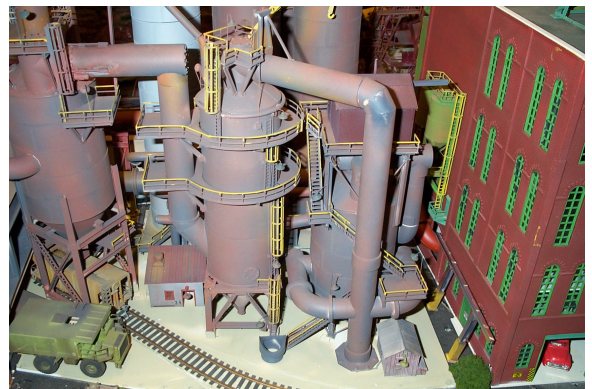
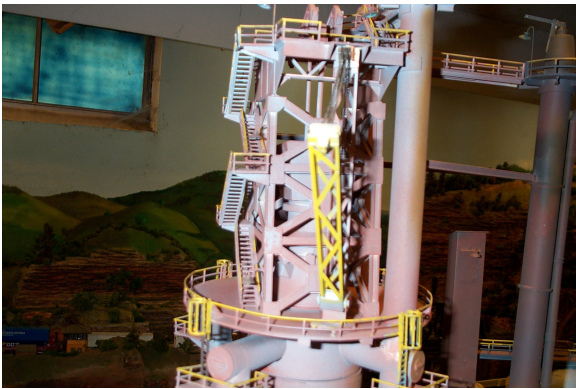
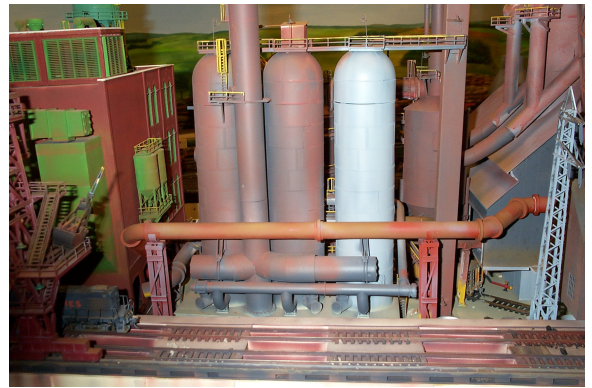
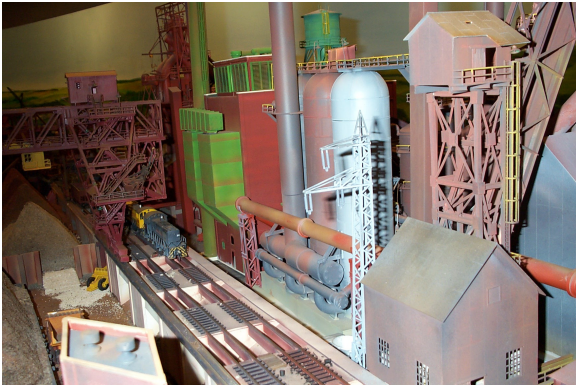




Photos are from Dale Desser's collection



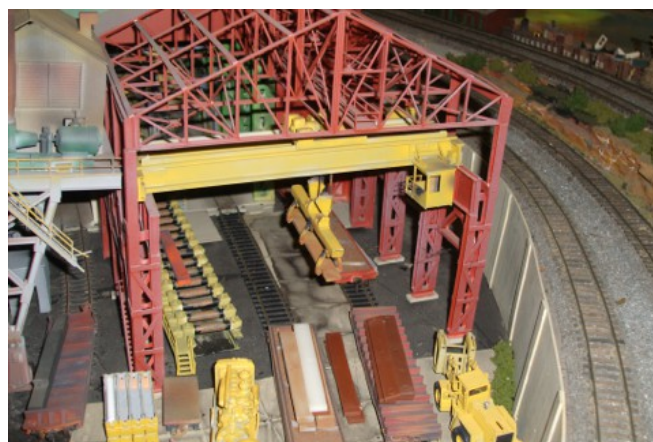


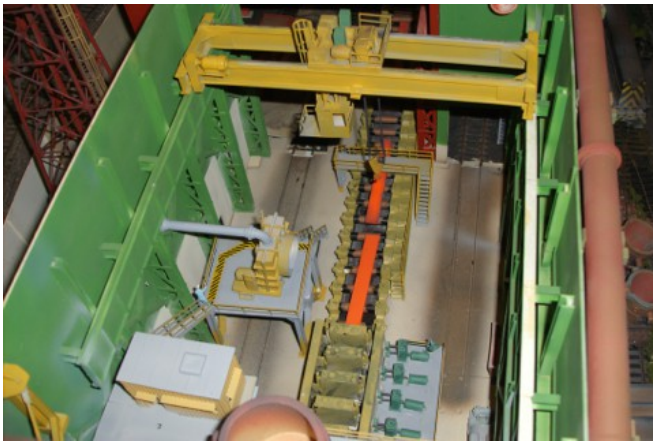




Chapter 3: Continuous Caster

Photos are from Brain Shaw's collection





Photos are from Tom Stewart's collection





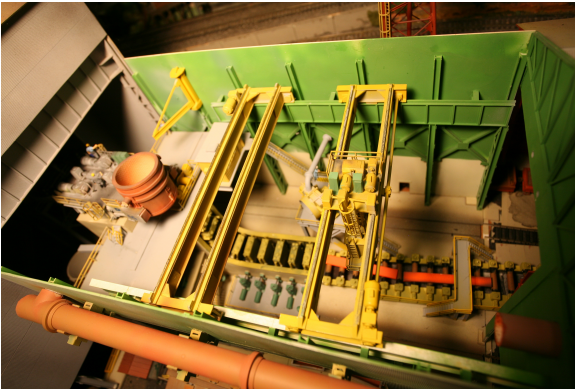


Photo are from Kem Stroebel's collection



Photos are from Dale Desser's collection





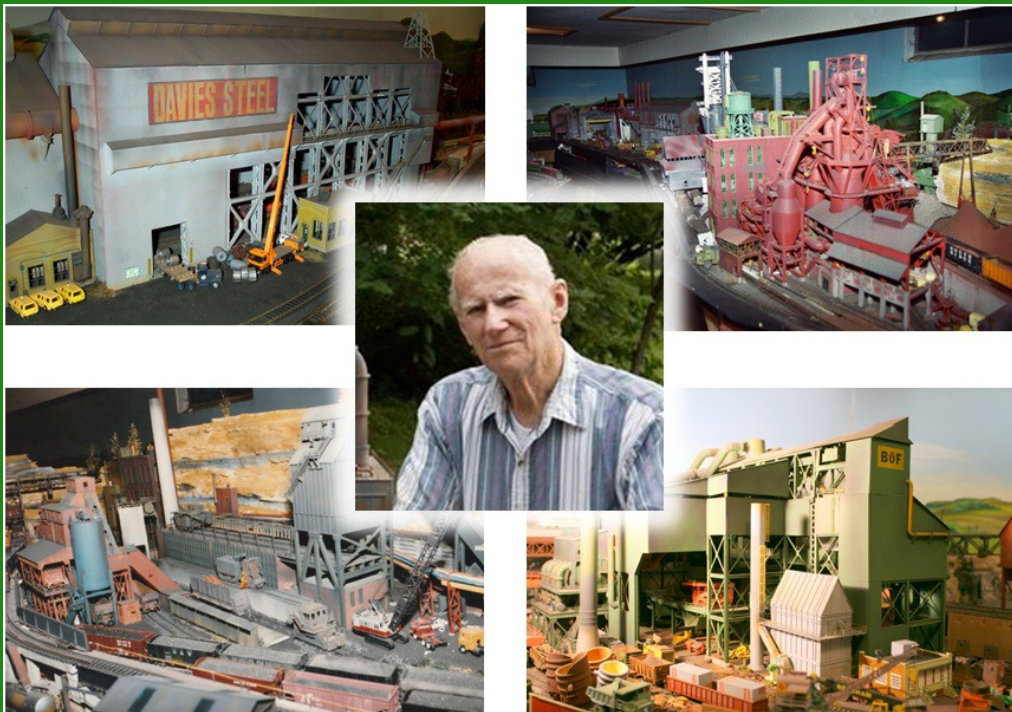


Continues in::
The Mill's
Dean Freytag
Part 2: Buildings II

The Mill is a publication of the Steel Mill Modeling and Steel Mill Pictorial groups

THE MILL

July 2021



Dean Freytag
Part 2: Buildings II